

Basic Tune

John Carty

Liz Carroll

5

Basic

John

Liz

9

Basic

John

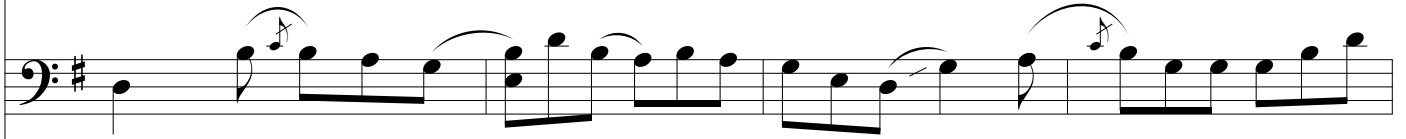
Liz

13

Basic



John

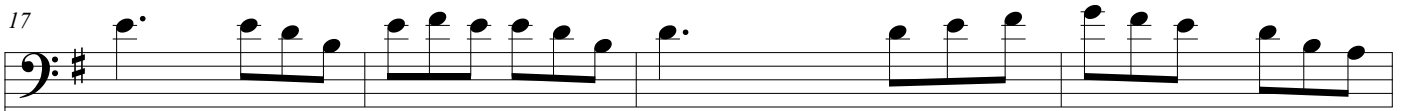


Liz

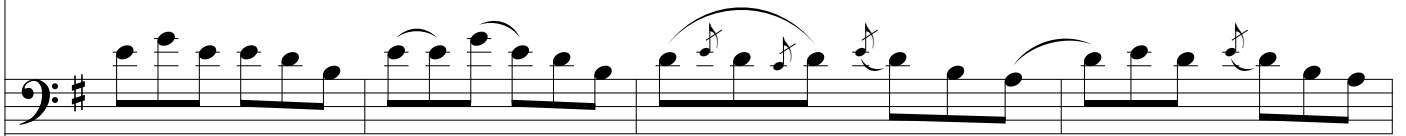


17

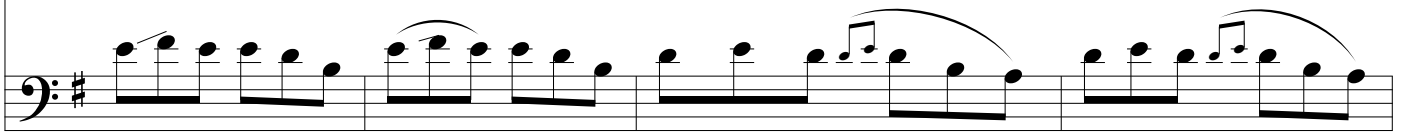
Basic



John



Liz

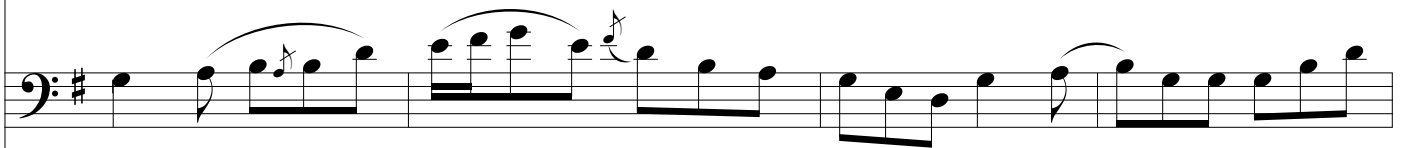


21

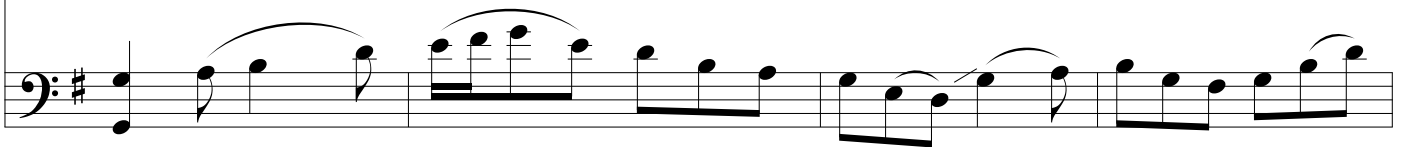
Basic



John



Liz



25

Basic

John

Liz

This block contains the first system of music, measures 25 through 28. It consists of three staves: Basic, John, and Liz. All staves are in the bass clef with a key signature of one sharp (F#). The Basic part features a simple melody with dotted rhythms. The John part has a more complex line with slurs and ties. The Liz part provides a rhythmic accompaniment with slurs and ties.

29

Basic

John

Liz

This block contains the second system of music, measures 29 through 32. It consists of three staves: Basic, John, and Liz. All staves are in the bass clef with a key signature of one sharp (F#). The Basic part continues the simple melody. The John part features a melodic line with slurs and ties. The Liz part continues the rhythmic accompaniment with slurs and ties.